

Mayor of the City of Yokohama
Fumiko Hayashi

The City of Yokohama formulated the "Yokohama 3R Dream Plan" based on the "Yokohama G30 Plan." Although the G30 Plan promotes separation of garbage and recyclables and recycling, this plan aims to reduce garbage (waste generation control) and its impact on the environment, and ensure the environment's richness for posterity. We will endeavor to establish a society comprising of citizens and companies where children have dreams for the future.

Yokohama ^{slim} 3R Dream Plan

Beyond the **G30 Plan**
Yokohama 3R Dream!
slim

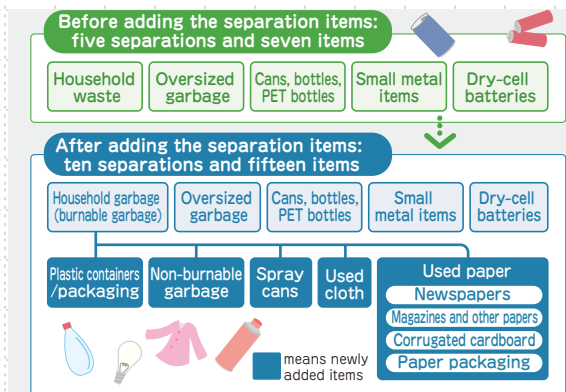
① Previous G30 Plan

We have promoted reduction of the amount of garbage by 30% (as compared to the generation for FY 2001) by FY 2010 with the cooperation among citizens and companies.

Great results of the reduction of the amount of garbage

We managed to **reduce the amount of garbage by 30%** in FY 2005, five years prior to the target of the G30 Plan

We **reduced the amount of garbage by 42.2%** in FY 2009.

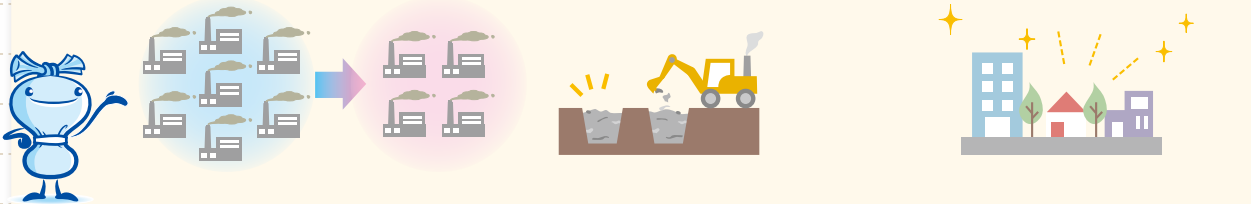


As a result

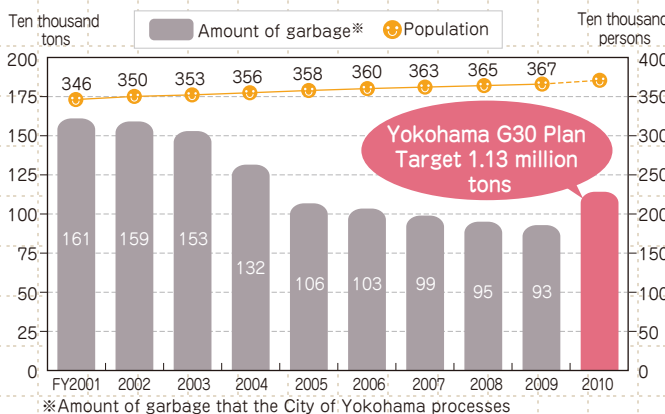
Incineration plants were reduced.

Landfill processing sites were prolonged.

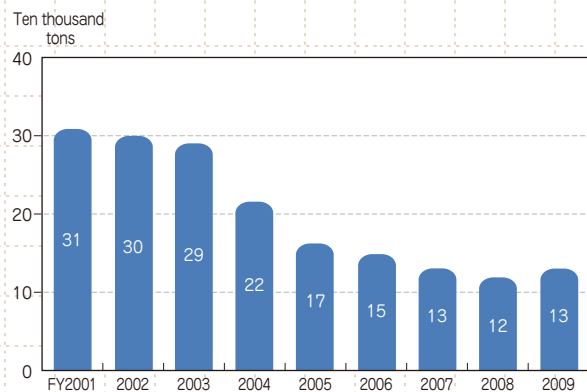
Greenhouse gas (GHG) emissions such as CO₂ emissions were reduced due to reduction of burnable garbage.



[Change of the amount of garbage and population]



[Change of the amount of general waste to landfills]



Although the population of Yokohama has increased, the amount of garbage has reduced like this.



The amount of general waste to landfills has also steadily decreased.

In the future,

Garbage must be incinerated and processed in landfills; however, we have only one site for landfills.

Therefore, **We need to use the site carefully for years by reducing garbage.**

GHGs such as CO₂ are emitted as we process garbage.

Therefore, **We need to tackle global warming by reducing garbage.**

② New plan

Scheduled period.....FY 2010 to FY 2025

Based on the G30 Plan, we plan **to reduce garbage (waste generation control)** while continuing the separation and recycling of garbage **to deal with global warming and to reduce CO₂ emissions**. Furthermore, we will endeavor to realize comfortable and livable city where garbage is controlled by pursuing **safe, secure, and stable** garbage processing.

1

Further challenge for 3R

Reduce
Reuse
Recycling

We will reduce total generation of garbage (total amount of garbage and recyclables) by **more than 10%** by FY 2025 (as compared to the generation for FY 2009).

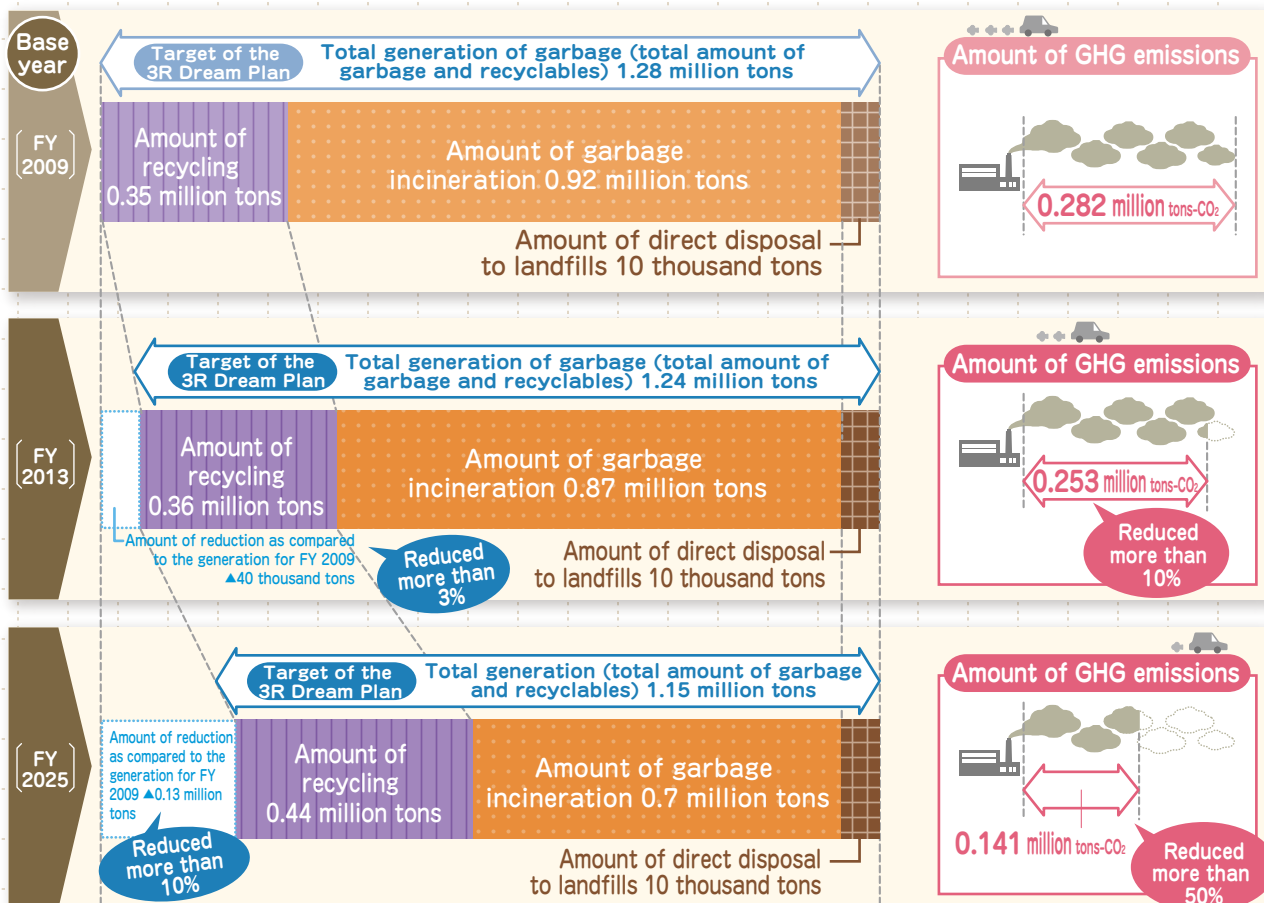
We will reduce garbage by **more than 3%** of total generation by FY 2013.

2

Reducing garbage to deal with global warming

We will reduce GHG emissions from garbage processing by **more than 50%** by FY 2025 (as compared to the emissions for FY 2009).

We will reduce GHG emissions by **more than 10%** by FY 2013.



In order to further express our commitment to deal with global warming including implementing measure related to garbage processing, we set a target for GHG emissions reduction adding the effect of garbage-based electric power generation in the calculation method of Action Plan for Local Government based on the Law Concerning the Promotion of the Measures to Cope with Global Warming.

3

Pursuing safe, secure, and stable garbage processing

We will pursue safety, security, and stability in every phase of garbage processing from collection and transportation to processing and disposal.

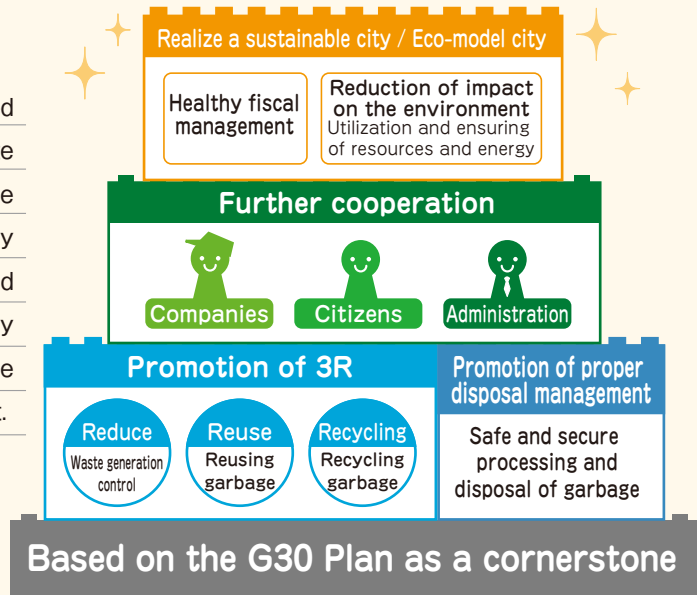


We will ensure appropriate garbage separation consistently. Then, we will strive to reduce garbage with fun. The more we reduce garbage, the higher is the reduction in CO₂ emissions.

③ Basic principle and others

Basic principle

We will endeavor to effectively use limited resources and energy as well as to promote 3R based on further cooperation among the citizens, companies, and administration by conducting proper disposal management, and establish a sustainable and Eco-Model City by combining reduction in the impact on the environment and healthy fiscal management.



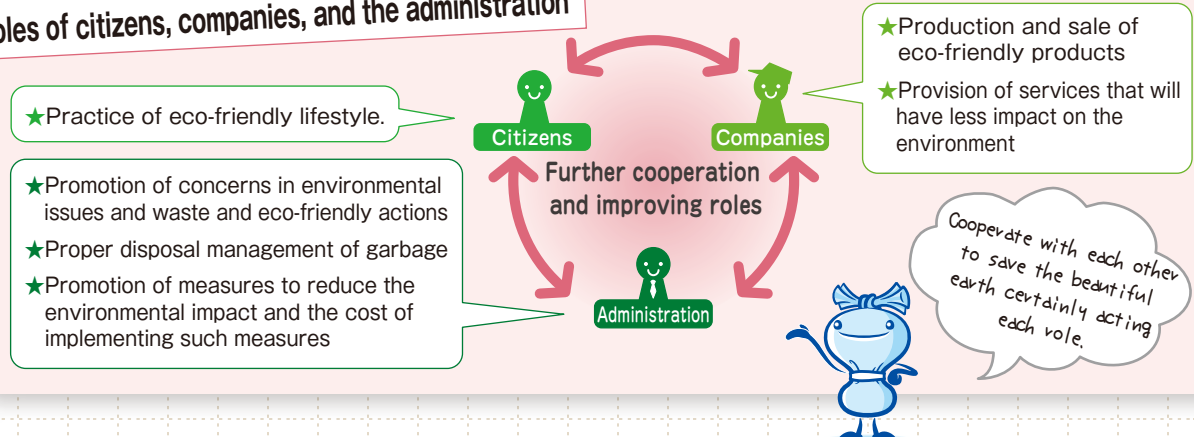
Future of Yokohama (future vision of the administration tackling waste)

- ★ In the city, every party cooperates and practices the 3Rs as part of an eco-conscious lifestyle and business approach.
- ★ Garbage processing system with less impact on the environment is established.
- ★ The city is always clean and neat.
- ★ Every citizen can live comfortably without facing any issues related to waste in the city.

Five fundamental directions supporting the basic principle



Roles of citizens, companies, and the administration



4 For achieving the target

Further challenge for 3R

What is "3R"?

- R**educe Reduce garbage itself
- R**euse Use any goods as long as we can
- R**ecycling Separate and use articles as recyclables

What's the difference between these and previous activities?

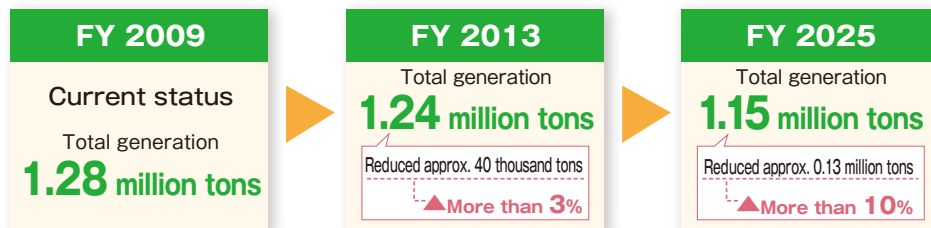


Recycling also requires energy.

Therefore,

We need to take up waste reduction (waste generation control) with you as a challenge.

Reduction target of total generation of garbage (total amount of garbage and recyclables)



What can we do for reducing garbage?

Enjoy "Mottainai" actions with "cool" Yokohama-way.

Citizens

- ★ Meticulous separation
 - Used paper
 - Plastic containers/packaging
- ★ Decline unnecessary plastic bags and wrappings at shopping.
- ★ Bring "my" own items
 - My bag
 - My bottle
 - My chopsticks
- ★ Refrain from excess meals
- ★ Drain water out of kitchen scraps

Companies

- ★ Meticulous separation
 - Used paper
 - Plastic items
- ★ Simple packaging
- ★ Thinning of containers
- ★ Use of returnable containers
- ★ Development and manufacture of long-lasting products
- ★ Recycling of food waste

Ways to participate in Yokohama R (Reduce) Platform

Website

Flea market and event information

Mail magazine

Yokohama R (Reduce) Committee

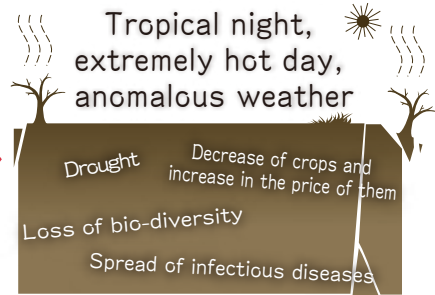


Tackle global warming starting from reduction of garbage

Why do we tackle global warming?

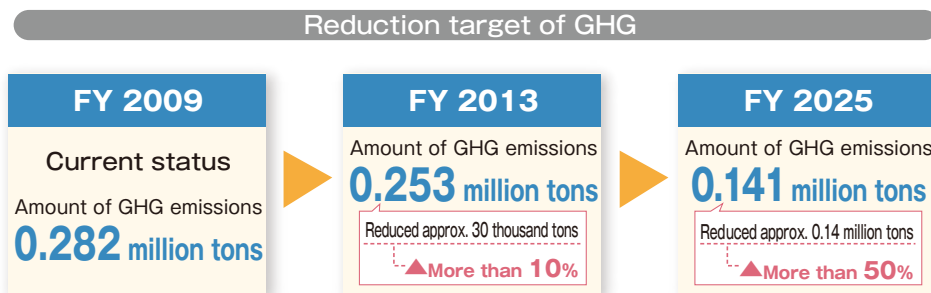


Global warming is accelerated.



Yokohama City promotes the commitment to tackling global warming as an Eco-Model City.

Because tackling global warming is a crucial point for waste disposal, we established reduction target of GHG.



How can we reduce GHG emissions?



Logo of "My bottle spot"

This logo means that the shop provides beverages for "My bottle"



Reduce of garbage

(waste generation control)

Further meticulous separation

Decline unnecessary plastic bags at shopping

Ensure separation of PET bottles and plastic containers/packaging

Bring "My bottle"

Use clothes carefully for as long as possible

Take advantage of flea markets

Reduce plastic garbage

Plastic containers/packaging (target of separation)/ plastic items

Reduce garbage of synthetic fiber

Nylon and polyester, etc.

Efficient electric-power generation burning garbage

Do not take excess meals (no leftovers)

Drainage of kitchen scraps

If we reduce the water of kitchen scraps, they become burnable during incineration.



Reduce the water of garbage

5 Concrete measures to address the master plan



Followings are the major objectives that we plan to achieve within the scheduled period of Yokohama's mid-term four year plan (from FY 2010 to FY 2013).

These are featured projects within the mid-term.

1 Environmental study and education

- ★ Active provision of garbage and environmental information
- ★ Community-based information dissemination
- ★ Human resource development for promoting and practicing eco-friendly activities

- Education of information to newcomers, foreigners, and the elderly
- Improvement of "catering seminars" conducted by offices and plants
- Establishment of a new promotional organization to gather local human resources

2 Promotion of reduce (waste generation control)

- ★ Promotion of reduce with the cooperation among citizens, companies, and administration

- Set and operation of "Yokohama R (Reduce) Platform"

More details are at  <http://www.r-hiroba.jp/>

3 Measures to reduce household waste

- ★ Provision of a comprehensive range of services to meet the needs of the citizens
- ★ Support of the local communities
- ★ New recycling activities
- ★ Reduction and recycling of household waste
- ★ Maintenance and operation of intermediate treatment facilities of recyclables
- ★ Proper disposal management of household waste
- ★ Approach to the Japanese government and other entities

- Promotion of public service to visit the elderly and handicappers and collect their garbage
- Improvement of the office so that it serves as a consulting and educational window for citizens
 - ➔ Opening consulting window
- Higher commitment to improve local collection points
 - ➔ Starting a "local-collection-point improvement team"
- New activities to recycle for kitchen scraps
 - ➔ Experiment to generate biogas from kitchen scraps
- Further meticulous separation

4 Measures to reduce business garbage

- ★ Reduction and recycling of business garbage
- ★ Proper disposal management of business garbage
- ★ Cooperation with companies that practice environmental actions
- ★ Development of recycling companies

- Promotion of reduce and recycling of food waste
- Awarding excellent companies
- Thorough guidance of separation by inspecting carrying-in items at incineration plants and offices

5 Processing and disposal of garbage

- ★ Safe and stable processing and disposal
- ★ Reduction of environmental impact of garbage processing
- ★ Ensuring operational efficiency
- ★ Researches for 3Rs and the promotion of the proper disposal management

- Seismic reinforcement work of the Tsuzuki Plant
- Maintenance of the Minami-honmoku Waste Landfill Site (fifth block)
- Utilization of burned ashes
- Promotion of energy-conservation

6 Establishing a clean city

- ★ Establishing a clean city with the cooperation of local communities

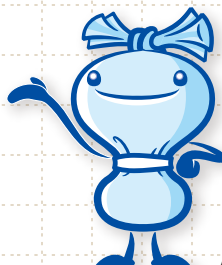
- Promotion of voluntary actions that suit local circumstances in order to beautify the city
- Enhanced monitoring of areas prone to illegal dumping

Here comes a new friend!

The friend's name is "Io"; "I" is from Japanese "one" and "five," and "O" is from Japanese "zero". The figures represent the target of the new plan more than 10% reduction in the total amount of garbage and recyclables consumed and more than 50% reduction in GHG emissions. "Io" is going to promote 3R with "Mio".

Hello!

"Yokohama 3R Dream!" mascot "Io"



Alian Hera "Mio"

We display every aspect of the plan on the websites of the City of Yokohama Resources & Waste Recycling Bureau

Find **Resources & Waste Recycling Bureau** from <http://www.city.yokohama.lg.jp/>

Q

Has the G30 Plan gone? Where's the vision?

A

No, it's not yet gone.

Based on the G30 Plan, we will endeavor to further reduce and recycle garbage by involving citizens and companies.

City of Yokohama Resources & Waste Recycling Bureau,
Resources and Waste Policy Division

Published in January 2011

1-1 Minato-cho Naka-ku Yokohama, Japan 231-0017

☎045-671-2503 ☎045-641-1807 ✉sj-seisaku@city.yokohama.jp



リサイクル適性 (A)

This brochure is recyclable for printing paper.