

We are Preparing a New Medium-Term Plan! — Summary of basic perspectives behind the preparation —



Towards a bright future brimming with hope



Fumiko Hayashi
Mayor of Yokohama

Over the eight years and seventh months since I was first inaugurated as mayor, I have striven to reduce waiting lists for nursery schools and childcare centers, augment medical and welfare service arrangements, assist women's empowerment, promote small and medium enterprises and business districts, and attract corporate siting. I have also devoted my energies to action in areas including tourism and MICE, culture and the arts, and development of communities filled with flowers and greenery.

Thanks to the support of all concerned, these initiatives are steadily taking effect. Over the last five years, the women's labor force participation rate rose by 6.6 percentage points. There have also been bit increases in the number of tourists visiting Yokohama and in spending, and all sense that the economic picture has brightened. Preparations are likewise smoothly proceeding for major events beginning next year, such as the Rugby World Cup 2019™, the 7th Tokyo International Conference on African Development, and the Tokyo 2020 Olympic and Paralympic Games.

In the autumn of this year, we are going to build on these results in preparing the New Medium-Term Plan aimed at keeping Yokohama a vibrant city whose children as tomorrow's principals will feel aspiration and hope. We have recently put together a basic orientation for the Plan, and incorporated approaches for its sure deployment into the draft budget for fiscal 2018. We are also going to make solid investments for the future, in order to protect the safety and security of our citizens and give Yokohama's economy a big push.

I am committed to continue doing my utmost to make Yokohama a bright city filled with hope, together with all of our citizens.

We have prepared the draft budget for FY2018.

Contact: Financial Affairs Division, Finance Bureau

Tel: 045-671-2231 Fax: 045-664-7185

横浜市 30 予算案

Fiscal 2018 is the year for preparation of the New Medium-Term Plan. We have prepared a budget with a view to getting the Plan off to a solid start in its first year.

Please see this link for more details on the fiscal 2018 draft budget.



Yokohama municipal bond mascot Hamasai

Key points of the FY2018 draft budget

Economy, culture/arts, tourism, MICE (powerful economic growth and a city of cultural and artistic creation)

- Economic vibrancy ● Building a city of cultural and artistic creation
- Preparations for the 7th TICAD
- Preparations for hosting matches in Rugby World Cup 2019TM and events in the Tokyo 2020 Olympic and Paralympic Games

Environment and energy (an environmentally advanced city filled with flowers and greenery)

- Promotion of Garden City Yokohama ● Reinforcement of approaches under the Future City Initiative
- Reduction of food loss

Medical care, nursing, healthcare, etc. (taking up the challenge of the ultra-aged society)

— Construction and promotion of a community-based integrated care system

- Assurance of medical functions toward 2025 ● Preparation of special-care homes for the aged
- Assurance of the supply of care workers and support for their steady employment
- Start of Phase 2 of the Yokohama Walking Point program

Community development in central and suburban areas

(development of communities for gathering and activity by people and companies)

- Reinforcement of functions in the central waterfront area ● Promotion of urban development
- Use of former sites of US military facilities ● Attraction of international gardening exhibitions

Human resource development (development of diverse human resources to create the future)

- Improvement of the child-raising environment ● Improvement of the environment for education
- Mitigation of child poverty ● Support for women's empowerment
- Improvement of support for adults and children who are receiving medical care or have disabilities

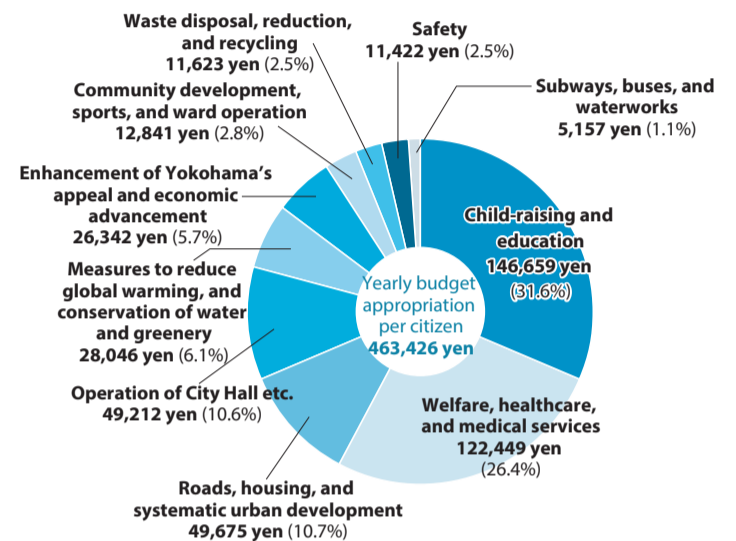
City-building (building a resilient city to create the future)

- Promotion of approaches to disaster prevention and mitigation
- Reinforcement of the international competitiveness of the Port of Yokohama
- Improvement of transport networks ● Maintenance and upgrading of public facilities

Breakdown of budget spending per citizen

Here is how the fiscal 2018 budget will be spent in terms of the average amount per citizen.

(The calculation is based on the population of 3,733,084 as of January 1, 2018.)



Outline of the budget

● Size of the budget in each account

The fiscal 2018 budget for the General Account amounts to 1,730 billion yen (up 5.1 percent from fiscal 2017).

In the aspect of income, tax revenue is projected to reach 812.6 billion yen (up 13.0 percent)*, due to a variety of factors. These include the increase in personal municipal tax revenue as a result of the transfer of tax revenue sources accompanying the transfer of authority from the prefectural government to the city for the burden of salary payments to teachers (in April 2017) and the rise in the number of salaried income tax payers; the increase in corporate municipal tax revenue based on expansion of corporate earnings; and the increase in fixed assets tax owing to land revaluation and the construction of new and expansion of existing housing.

In the aspect of expenditures, appropriations came to 247.4 billion yen (up 29.9 percent) for improvement of facilities etc. and 487.3 billion yen (up 3.8 percent) for social assistance expenditures, which consist of spending for child-raising, education, healthcare, and medical services.

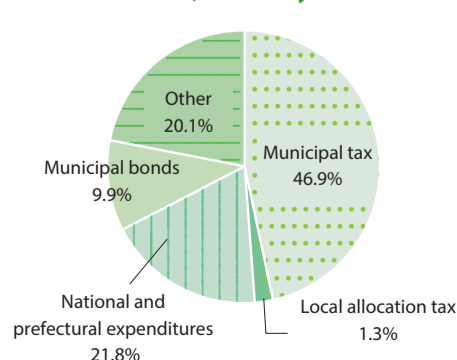
* The rate of increase when the tax resource transfer accompanying the transfer of authority from the prefectural government to the city for the burden of salary payments to teachers (84.2 billion yen) is 1.3 percent.

Size of the budget in each account

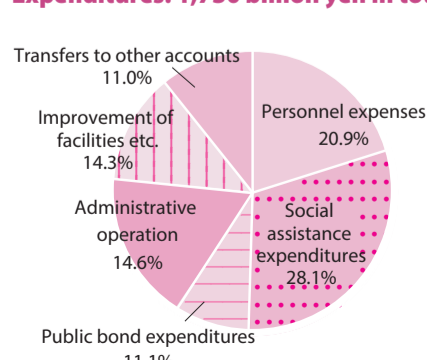
Accounts	Budget amount (billions of yen)	Increase from FY2017
General Account	1,730.0	5.1%
Special Account	1,295.5	-3.7%
Public Enterprise Account	565.6	-2.5%
Total	3,591.1	0.6%

* The net total of all accounts excluding overlap for mutual interchange between accounts is 2,849.7 billion yen.

Revenue: 1,730 billion yen in total



Expenditures: 1,730 billion yen in total



● Management of the city finances for both promotion of initiatives and maintenance of financial health

◆ Systematic use of municipal bonds for management of the outstanding balance of loans to be handled through the General Account

In keeping with the spirit of the article concerning responsible financial management in Yokohama into the future, and in order to both promote initiatives and keep the city finances on sound footing, the city must make systematic use of municipal bonds from a medium- and long-term perspective, and manage the outstanding balance of loans to be handled through the General Account.* This balance is projected to reach 3,167 billion yen at the end of fiscal 2018, which is approximately the same as at the end of fiscal 2017.

* The municipal bond balance in the General Account, and the loan balance of the Special Account, Public Enterprise Account, and extra-governmental groups to be handled through the General Account

◆ Amount of municipal bond use in the FY2018 budget

The amount of municipal bond use in the fiscal 2018 budget was put at 171.6 billion yen. The city is going to continue using municipal bonds while steadily taking action on various agenda, including promotion of projects for construction of the Yokohama Ring Expressway North-West Route, the new City Hall building, and embankments (Shinko No. 9 and Daikoku Pier), as well as the maintenance and updating of neighborhood facilities necessary for improvement of the civic life and stimulation of the city economy, such as childcare centers, special care homes for the aged, school facilities, roads, parks, and rivers.

● Rigorous review of clerical work

◆ Elimination of 1,176 tasks for a savings of 11.6 billion yen in total

To promote requisite initiatives with a finite supply of management resources, the city conducted a review of all projects and work, without exception, with a view to achieving both efficient and effective operation of administrative services. More specifically, besides reviewing internal costs in City Hall, it promoted privatization and outsourcing, revised project procedures, reduced costs, and promoted effective use of ICT, among other steps.

* In the graphs and the table, the figures for each item are rounded to the nearest integer, and therefore may not add up to the total figures indicated.

When a major earthquake strikes

Contact: Crisis Management Division, General Affairs Bureau

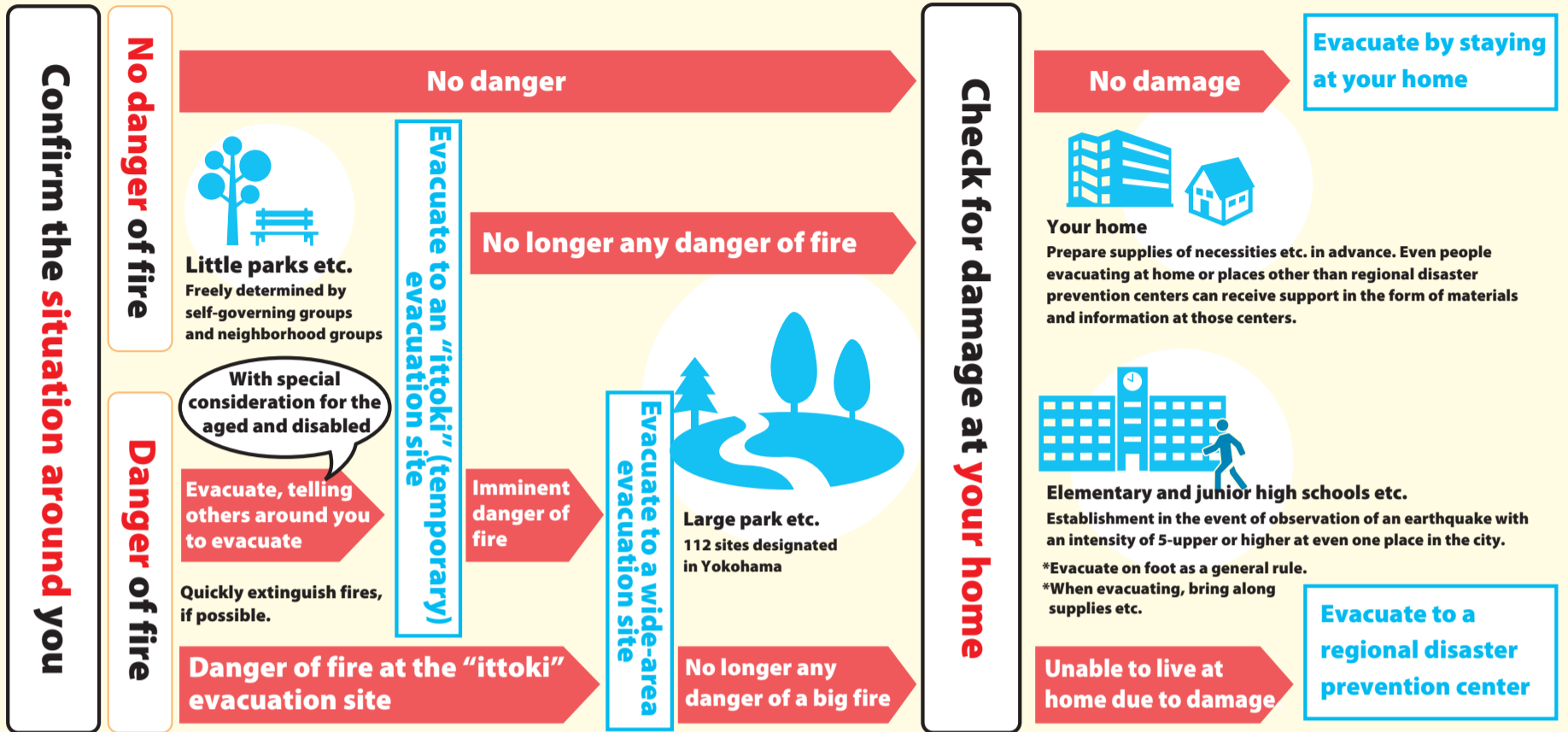
Tel: 045-671-2012 Fax: 045-641-1677

横浜市 危機管理 Search

When a major earthquake strikes, first ensure your own safety. If your house is undamaged, you do not have to evacuate to a regional disaster prevention center (designated evacuation site). Please take evacuation action in correspondence with the prevailing situation.

Flow of evacuation action

* You do not necessarily have to take the action indicated here.



Take action to assure your safety on the site.

Preparations for major earthquakes

Store enough supplies for at least 3 days per person



Drinking water
(The guideline supply for 3 days is 9 liters per person)



Food products and everyday articles



Toilet packs
(The guideline supply for 3 days is about 15 packs per person)

For more details on supplies etc. 防災よこはま Search

Recommendation of subscription to earthquake insurance and mutual aid programs

If your house is damaged in a major earthquake, there may be a substantial cost to repair or rebuild it. Subscription to an insurance or mutual aid program will assist the smooth rebuilding of your house and life in an emergency.

Revision of the earthquake section of the city disaster preparedness plan

Start of application on April 1

We revised the aforementioned section in light of the lessons learned in the 2016 Kumamoto Earthquake, city approaches, and opinions from citizens. The main points of revision are as follows.

Welfare evacuation sites

- We changed the name from “special evacuation sites” to “welfare evacuation sites*”.
- We set forth the operating procedure regarding evacuation to welfare evacuation sites.

Disposal of disaster waste

We drew a distinction between debris and refuse from clean-up after disasters and ordinary combustible refuse.

Setup for cooperation with volunteers

We explicitly mentioned the building of relationships with volunteers.

Measures for evacuation in cars

Evacuation by staying in private automobiles poses the risk of the economy class syndrome and other diseases. We shall aim for its curtailment and early resolution.

*Welfare evacuation sites

These are secondary evacuation sites for aged and disabled who would experience particular difficulty in evacuation life at regional disaster prevention centers or at home. (People who are not aged or disabled may not evacuate to welfare evacuation sites.)

3 Saturdays in March (10, 24, 31)

Ward offices to be open on three Saturdays in March

In March and April of each year, counters at ward offices are crowded with citizens performing procedures for moving. In response, the ward offices are going to be provisionally open on March 31 as well as on March 10 and 24, the second and fourth Saturdays, when they are ordinarily open.

3月						
日	月	火	水	木	金	土
25	26	27	28	1	2	3
4	5	6	7	8	9	10
11	12	13	14	15	16	17
18	19	20	21	22	23	24
25	26	27	28	29	30	31

Provisional opening of ward offices

Date and time of provisional opening: **March 31 (Sat.), 9:00 a.m. – 12:00 noon**

Handling: certain work such as notifications accompanying moving (resident relocation)

- Family Registry Division (notification of resident relocation, family registry, resident certificate, seal registration, etc.)
- Health Insurance and Pension Division (national health insurance, national pension program, etc.)
- Children and Families Support Division (childcare allowances, distribution of the maternal and child health handbook)

*The ward offices will not be able to perform certain work, such as work that cannot be processed by the system on weekends and holidays (e.g., assignment of My Number numbers for notifications of birth) and work requiring the placement of inquiries to other cities or institutions. For details, contact the concerned division of your ward office.

Contact: City Call Center Tel: 045-664-2525 Fax: 045-664-2828

Contact: Service Window Division, Civic Affairs Bureau

Tel: 045-671-2177 Fax: 045-664-5295

Starting on April 1

Yokohama will become the operator of the program of aid for special medical costs (for specified intractable diseases).

In accordance with legal stipulations effective April 1, the operator of the program of aid for special medical costs (for specified intractable diseases) will change from Kanagawa Prefecture to the City of Yokohama.

Place for procedures: **No change**

The counter of the Elderly and Disabled Support Division in the ward office of the ward where you live.

* However, it will no longer be permissible to have applications for such aid received in cities, towns, or villages other than Yokohama.

Application by post: **Change**

The address will change from Kanagawa Prefecture to the Public Health Affairs Division, Health and Social Welfare Bureau, City of Yokohama

Beneficiary certificates

Beneficiary certificates valid until September 30, 2018



Can be used as is even after April 1

Method of renewal beginning on October 1, 2018



The city will send you information about this method around June 2018.

Contact:

Public Health Affairs Division, Health and Social Welfare Bureau

Tel: 045-671-4040 Fax: 045-664-5788

横浜市 難病

Search